



Introducing iNetVu™, the revolutionary 2-way high speed Mobile Satellite Internet System for people on the move that need to communicate. With C-COM's iNetVu™ users now have the ability to conduct business from remote locations similar to the way they do from their central offices.

How does it work?

iNetVu™ allows you to access the Internet at high-speed with your personal computer or laptop virtually anywhere your Vehicle, Motor Coach or Commercial Mobile platform is parked.

The iNetVu system mounts easily on top of vehicles (RVs, SUVs, Vans or any other commercial vehicle) or transportable platform, and with a simple click the dish automatically deploys, locks on to the selected satellite and interfaces with the modem to enable service.

Once locked on, you are automatically connected to the Internet at broadband speeds. No phone lines, no cellular hook ups - just instant broadband speed at your fingertips.

Where does it work?

With iNetVu™ you gain unprecedented coverage throughout the Americas, Caribbean, Europe, the Middle East, Africa and Australia.

Virtually anywhere! As long as there is a clear line of sight of the desired satellite and there is service available in your area.

Why choose iNetVu™?

Four words: **Rapid, Robust, Reliable** and **Adaptable**. iNetVu offers Satellite acquisition within a few minutes after you have parked your vehicle or platform.

The same automount antenna, controller and software work with many of the world's leading satellite-based Internet providers, namely; Comtech, EMS, HNS Direcway, iDirect, Nera, Tachyon, ViaSat, Gilat and Gilat-based systems such as Starband and SpaceNet. These robotic self-pointing platforms are available in various sizes to meet your requirements.

Who is C-COM Satellite Systems?

C-COM Satellite Systems Inc. is an Ottawa, Canada based publicly traded technology company (Toronto Venture Exchange: CMI) and a leader in the development of commercial quality satellite-based technology for the delivery of 2-way High-Speed Internet services for fixed and mobile applications.

At C-COM, our objective is the efficient delivery of advanced Mobile Satellite Internet solutions. The iNetVu product line is designed, developed, and delivered by C-COM through our partners worldwide.

Our 24/7, 365 Tier 1 and Tier 2 support provides dealers and organisations with multilingual support for all iNetVu products.



www.iNetVu.com

Toll Free 1-877-463-8886

iNetVu™ 740 Technical Specifications

Electrical

RF Interface

| | |
|-------------------------------|---------------------------------------|
| Feed Horn LNB & Tx cable..... | 2 RG6 cables for Tx and Rx (15' each) |
| Transmit (Tx) Power..... | 1 to 4 Watt (Ku band) |
| Transmit (Tx) Frequency..... | 13.75 – 14.5 GHz (Ku band) |
| Receive (Rx) Frequency..... | 10.95 – 12.75 GHz (Ku band) |
| Optional Satellite TV..... | Ask Your Dealer For Details |

Motors

| | |
|----------------------------|-----------------|
| Electrical Interface | 12V DC 15A max. |
|----------------------------|-----------------|

Mechanical

2-Way Satellite Dish and Mobile Mount

| | |
|-----------------------------|---|
| Reflector | 0.74 meter elliptical dish |
| Mount Geometry..... | 3-Axis, variable speed motor drive (Elevation, Azimuth and Skew) |
| Polarization | Dish rotation cross-polarization isolation |
| Deployment Sensors | GPS antenna |
| Compass $\pm 2^\circ$ | |
| Tilt sensor $\pm 0.2^\circ$ | |

Maximum Mount Rotation

| | |
|---------------------------|--|
| Azimuth..... | Full 360° in overlapping $\pm 200^\circ$ sectors |
| Elevation | 0 - 65° |
| Polarization | $\pm 70^\circ$ |
| Speed | |
| Depolying Elevation | Variable 5°/sec typical |
| Deploying Azimuth..... | Variable 15°/sec max, 10°/sec typ |
| Peaking..... | 0.2°/sec |

Dimensions of Dish

| | |
|-----------------------------|--|
| Mounting Plate..... | 18" x 49.5" (457 mm x 1257 mm) |
| Stowed Dish Ext. Dims | 60" long x 41" wide x 14" high (opt 12") (1524 mm x 1041 mm x 356 mm) |
| Deployed Height | Maximum height of 44" (1118 mm) |
| Weight | 123 lbs (56 kg) |

Environmental Survival

| | |
|---------------------|--------------------------------|
| Wind Deployed | 100 mph (160 km/hr) |
| Wind Stowed | 140 mph (225 km/hr) |
| Temperature..... | -40°F to 150°F (-40°C to 65°C) |

Operational

| | |
|------------------|--------------------------------|
| Wind | 45 mph (72 km/hr) |
| Temperature..... | -22°F to 130°F (-30°C to 55°C) |



iNetVu™ 750 Technical Specifications

Electrical

RF Interface

| | |
|-------------------------------|---|
| Feed Horn LNB & Tx cable..... | 2 RG6 cables for Tx. andRx. (15' each) |
| Transmit (Tx) Power..... | 1 Watt (Ku band) |
| Transmit (Tx) Frequency | 13.75 – 14.5 GHz (Ku band) |
| Receive (Rx) Frequency..... | 10.95 – 12.75 GHz (Ku band) |
| Optional Satellite TV..... | Ask Your Dealer For Details |

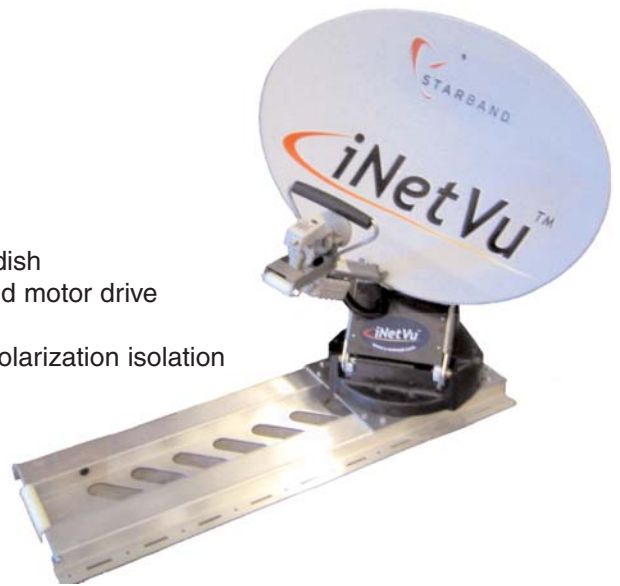
Motors

| | |
|----------------------------|-----------------|
| Electrical Interface | 12V DC 15A max. |
|----------------------------|-----------------|

Mechanical

2-Way Satellite Dish and Mobile Mount

| | |
|--------------------------|---|
| Reflector | 0.75 meter elliptical dish |
| Mount Geometry..... | 3-Axis, variable speed motor drive (Elevation, Azimuth and Skew) |
| Polarization | Dish rotation cross-polarization isolation |
| Deployment Sensors | GPS antenna |
| Compass ±2° | |
| Tilt sensor ±0.2° | |



Maximum Mount Rotation

| | |
|--------------------|--|
| Azimuth..... | Full 360° in overlapping ±200° sectors |
| Elevation | 0 - 62.5° |
| Polarization | ±70° |

Speed

| | |
|---------------------------|-----------------------------------|
| Deploying Elevation | Variable 5°/sec typical |
| Deploying Azimuth..... | Variable 15°/sec max, 10°/sec typ |
| Peaking..... | 0.2°/sec |

Dimensions of Dish

| | |
|-----------------------------|---|
| Mounting Plate..... | 49.5" x 18" (1257 mm x 457 mm) |
| Stowed Dish Ext. Dims | 52" long x 37" wide x 17" high (1320 mm x 940 mm x 432 mm) |
| Deployed Height | Less than 41" (1041 mm) |
| Weight | 123 lbs (56 kg) |



Environmental Survival

| | |
|---------------------|--------------------------------|
| Wind Deployed | 100 mph (160 km/hr) |
| Wind Stowed | 140 mph (225 km/hr) |
| Temperature..... | -40°F to 150°F (-40°C to 65°C) |

Operational

| | |
|------------------|--------------------------------|
| Wind | 45 mph (72 km/hr) |
| Temperature..... | -22°F to 130°F (-30°C to 55°C) |

 **iNetVu™**

iNetVu™ 950 Professional Technical Specifications

Electrical

RF Interface

Feed Horn LNB & Tx cable.....2 RG6 cables for Tx and Rx (15' each)
Transmit (Tx) Power.....1 to 4 Watt (Ku band)
Transmit (Tx) Frequency.....13.75 – 14.5 GHz (Ku band)
Receive (Rx) Frequency.....10.95 – 12.75 GHz (Ku band)

Motors

Electrical Interface.....12V DC 15A max.

Mechanical

2-Way Satellite Dish and Mobile Mount

Reflector.....0.95 meter elliptical dish
Mount Geometry.....3-Axis, variable speed motor drive
Polarization.....Dish rotation cross-pol isolation
Deployment Sensors.....GPS antenna
Compass $\pm 2^\circ$
Tilt sensor $\pm 0.2^\circ$



Maximum Mount Rotation

Azimuth.....Full 360° in overlapping $\pm 200^\circ$ sectors
Elevation.....0 - 65°
Polarization..... $\pm 70^\circ$
Speed
Deploying Elevation.....Variable 5°/sec typ
Deploying Azimuth.....Variable 15°/sec max, 10°/sec typ
Peaking.....0.2°/sec

Dimensions of Dish

Mounting Plate.....18" x 49.5" (460 mm x 1258 mm)
Stowed Dish Ext. Dims.....60" long x 53" wide x 19.5" high
(1524 mm x 1350 mm x 495 mm)
Deployed Height.....Maximum height of 48" (1220 mm)
Weight.....135 lbs (61.5 kg)

Environmental Survival

Wind Deployed.....100 mph (160 km/hr)
Wind Stowed.....140 mph (225 km/hr)
Temperature.....-40°F to 150°F (-40°C to 65°C)

Operational

Wind.....45 mph (72 km/hr)
Temperature.....-22°F to 130°F (-30°C to 55°C)



iNetVu™ 1200 Professional Technical Specifications

Electrical

| RF | Receive | Transmit |
|----------------|------------------------|------------------|
| Frequency..... | 10.95 – 12.75 GHz..... | 13.75 – 14.5 GHz |
| Gain (Midband) | | |
| R/T..... | 42.0 dBi | 43.5 dBi |
| VSWR..... | | 1.30:1 |

Beamwidth (degrees)

| | | |
|-----------------------------------|---------------------------------------|--------|
| -3 dB..... | 1.5 | 1.2 |
| -10 dB..... | 2.6 | 2.1 |
| First Sidelobe Level (±2 dB)..... | -20 dB | -20 dB |
| Radiation Pattern..... | Meets FCC Requirements for 2° Spacing | |

Antenna Noise Temperature

| | | |
|--------------------------|--------|--------|
| 20° Elevation Angle..... | 46°K | |
| 30° Elevation Angle..... | 43°K | |
| Polarization..... | Linear | Linear |

Cross-Pol Isolation

| | | |
|---------------------------------|-------|-------|
| On-Axis..... | 35 dB | 35 dB |
| Off-Axis (within .5 dB BW)..... | 32 dB | 32 dB |
| Off-Axis (within 1 dB BW)..... | 30 dB | 30 dB |

Feed Port Isolation

| | | |
|------------|-------|-------|
| RX/RX..... | 30 dB | |
| TX/RX..... | 60 dB | 60 dB |

Mechanical

| | | |
|-----------------------------|--------------------------------|--|
| Reflector..... | 1.2 M Prime Focus, Offset Feed | |
| Mount Geometry..... | Elevation over Azimuth | |
| Dimensions: | | |
| Height..... | 20" (Stowed) | |
| Height (Deployed Max.)..... | 68" | |
| Width..... | 48.6" | |
| Length..... | 75" | |
| Base Plate (LxW)..... | 71.5"x22" (1817mmx559mm) | |
| Weight..... | 212 lbs. (96Kg) | |

Maximum Mount Rotation

| | |
|-------------------|--|
| Azimuth..... | Full 360° in overlapping ±200° Sectors |
| Elevation..... | 0 - 75° |
| Polarization..... | ±90° |

Speed

| | |
|------------------------|-------------|
| Stowing/Deploying..... | 2°/second |
| Peaking..... | 0.2°/second |

Motors.....12V DC Variable Speed, Constant Torque

RF Interface

| | |
|---------------------------|---|
| Radio Mounting..... | Feed Arm, rear of base, or inside vehicle |
| Axis Transition..... | Twist-Flex waveguide |
| Waveguide..... | WR 75 Cover Flange Interface |
| Coax..... | RG6U from feedhorn to base connector |
| Electrical Interface..... | Connectors for Controller, 10M Ext. Cable |

Environmental Survival

| | |
|--------------------|--------------------------------|
| Wind Deployed..... | 70 mph (112 km/hr) |
| Wind Stowed..... | 140 mph (224 km/hr) |
| Temperature..... | -40°F to 150°F (-40°C to 65°C) |

Operational

| | |
|------------------|--------------------------------|
| Wind..... | 40 mph (64 km/hr) |
| Temperature..... | -22°F to 125°F (-30°C to 55°C) |



iNetVu™

iNetVu 5000B Controller Unit

Controller

Automatic Mode Input.....GPS, Tilt, Limits, Flux-Gate Compass and Antenna LNB

Physical

Type.....Full Function Controller
Size.....10.5"L x 6"W x 1.5"H (27cmLx16xnWx4cmH)
Weight.....2 lbs. (1kg)
Temperature.....0 - 50°C (32-122°F)

Drive

EL Output.....12 VDC, 12 Amps Max
AZ/Pol Output.....12 VDC (8A/2A Max)
Fuse.....15 Amp Fast Blow

Electrical

GPS module.....SMA connector
Rx. connector type.....Type F connector
Power Input.....12V DC @ 12.5A min
Idle Power Consumption.....12V DC @ 500 mA
Power Connector.....4 Positions 5.08mm Terminal Block
Motor Connector.....8 Positions 5.08mm Terminal Block
Signal Input.....Female DB26 Connector
PC Interface.....USB or Serial DB9 connector



iNetVu™ Mobile Software Main Features

- SIMPLY ONE BUTTON TO FIND SATELLITE**
- AUTOMATICALLY ACQUIRES IN 3 - 5 MINUTES**
- STOWS ON COMMAND AND FOR SAFETY**
- BUILT-IN GPS FOR MOBILITY**
- INTEGRATED WITH NUMEROUS SATELLITE MODEMS**
- WORLDWIDE USAGE WITH MAJOR SATELLITE SERVICE PROVIDERS**

Major Features

- Easy to Install, Configure and Operate
- Windows XP, 2000, NTcompatible
- PC Interface via USB or Serial Connection
- Modem-specific Interface via API, Telnet, Console, etc
- Basic Controls menu for normal operation
- Advanced Control menu for comprehensive system status
- Auto GPS updates to Modems resolves mobile ranging
- Optimal dish pointing calculations for ACP
- Built-in Motion Protections and automatic re-alignment
- Auto disable the Transmitter in case of antenna motion
- Auto stowing of the dish when a vehicle begins moving
- Powerful Help facility: Online Manual, Tips, Messaging
- Automatic Unattended Operation - Configurable
- Integrated iNetVu Navigator - Optional Software

Modem Compatibility

HNS Direcway

- DW4000
- DW4020
- DW6000
- DW7700

Gilat / Starband

- Gilat 360 / 360E
- StarBand 360
- StarBand 481
- StarBand 484
- SkyEdge

iDirect

- NetModem II
- NetModem II Plus
- iNFINITI Series 3000
- iNFINITI Series 5000
- iNFINITI Series 7000

ViaSat

- Linkstar DVB-RCS

EMS

- SIT Series 2000
- SIT Series 3000

Comtech

- CDM-600L
- CDM-570L

Tachyon

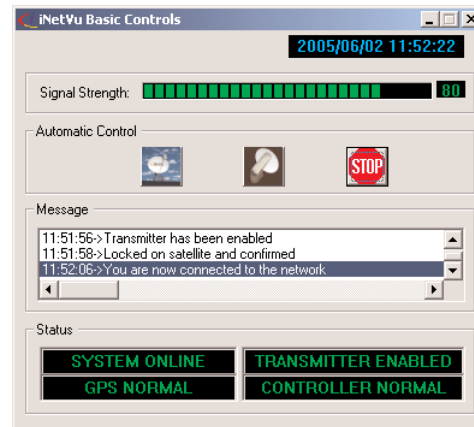
- CI-1300

TechniSat

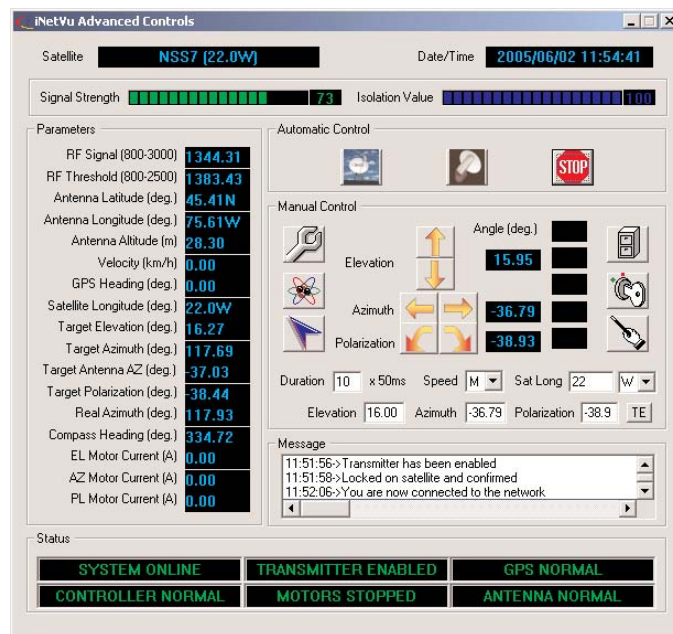
- SkyStar 2 TV PCI Receiver
- SkyStar USB Receiver

Nera

- SatLink 1000



Basic Controls Menu



Advanced Controls Menu

Enquire for any other modem applications to:
sales@c-comsat.com 1-613-745-4110

iNetVu™